

Coal Moisture Control (CMC)

Features

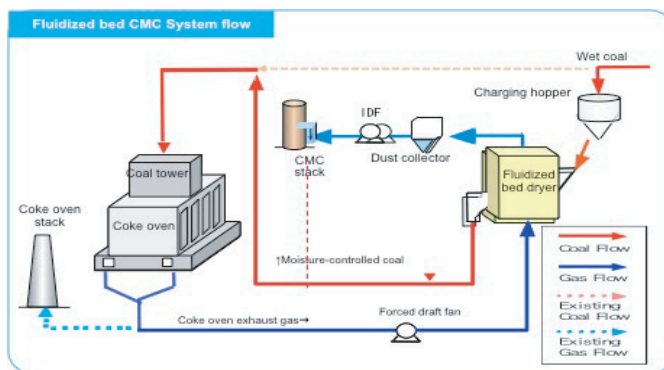
What is CMC?

- CMC is a system that dries the coal, which generally has a moisture content of 10% or more, to around a level of 6% before it is charged into coke ovens. By drying the coal, various benefits are brought about.
- NSC has installed CMC in all steelworks it operates. The most modern type employs a fluidized bed and was first introduced to the Muroran Works (Hokkai Iron & Coke Corporation) in 1996. Since then, it has been in smooth operation, continuously producing various benefits.

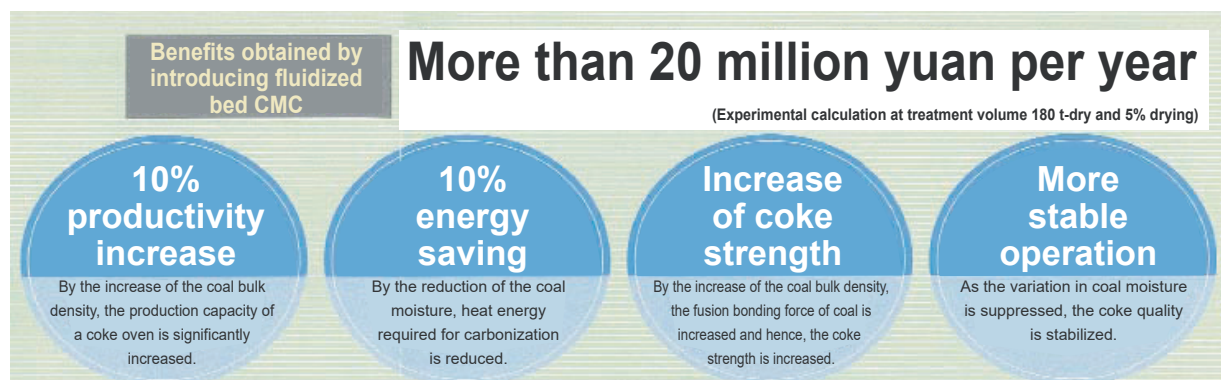
Features

- 1 Low investment cost:**
 - The fluidized bed that employs a direct heat exchanging method helps realize a compact and low-cost equipment configuration.
- 2 Low running cost:**
 - Exhaust gas from coke ovens is used as a heat source for drying, eliminating the need for additional fuel (NSC-patented process).
 - Less driving sections lead to simple equipment configuration and easy maintenance.
- 3 Abundant operation result:**
 - Based on the operation result spanning many years, an operational guideline for controlling the coal moisture has already been firmly established.
 - Abundant expertise has also been accumulated with regard to associated environmental control systems.

Basic Concept or Summary



Effects or Remarks



Installation in Practice or Schedule

Domestic Nippon Steel Corporation North Nippon Works

Overseas Maanshan Iron & Steel Co. Ltd.

Contact: NIPPON STEEL ENGINEERING CO., LTD.,
 Plant & Machinery Sector
 Tel: +81-3-6665-2000 Fax: +81-3-6665-4847